

JOYSTICK GRIP OF F-16 H.O.T.A.S

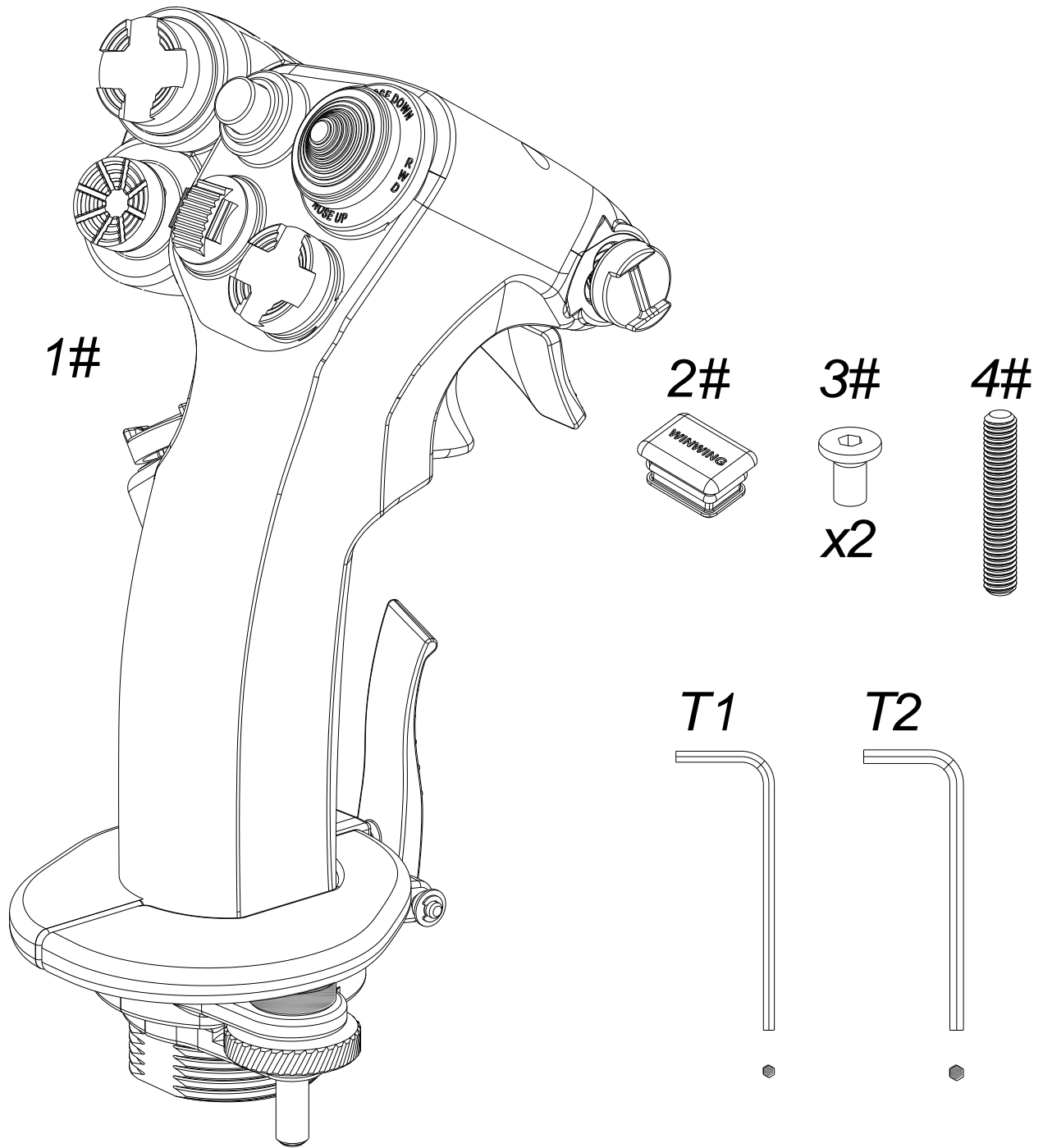
User Manual V1.0 2022.01



Content :

Content inside	1
1 Parameter.....	2
1.1 Performance	2
1.2 Compatibility.....	2
1.3 Size	3
2 Function.....	4
2.1 Button/Functions.....	4
2.2 Adjustment.....	5
3 Assembly.....	6
Extension Assembly.....	6
4 Connection of the parts	7
5 Base connection.....	7
6 Calibration.....	8
6.1 Mini-joystick calibration.....	8
6.2 Rz Calibration	9
6.3 Slider Calibration	10

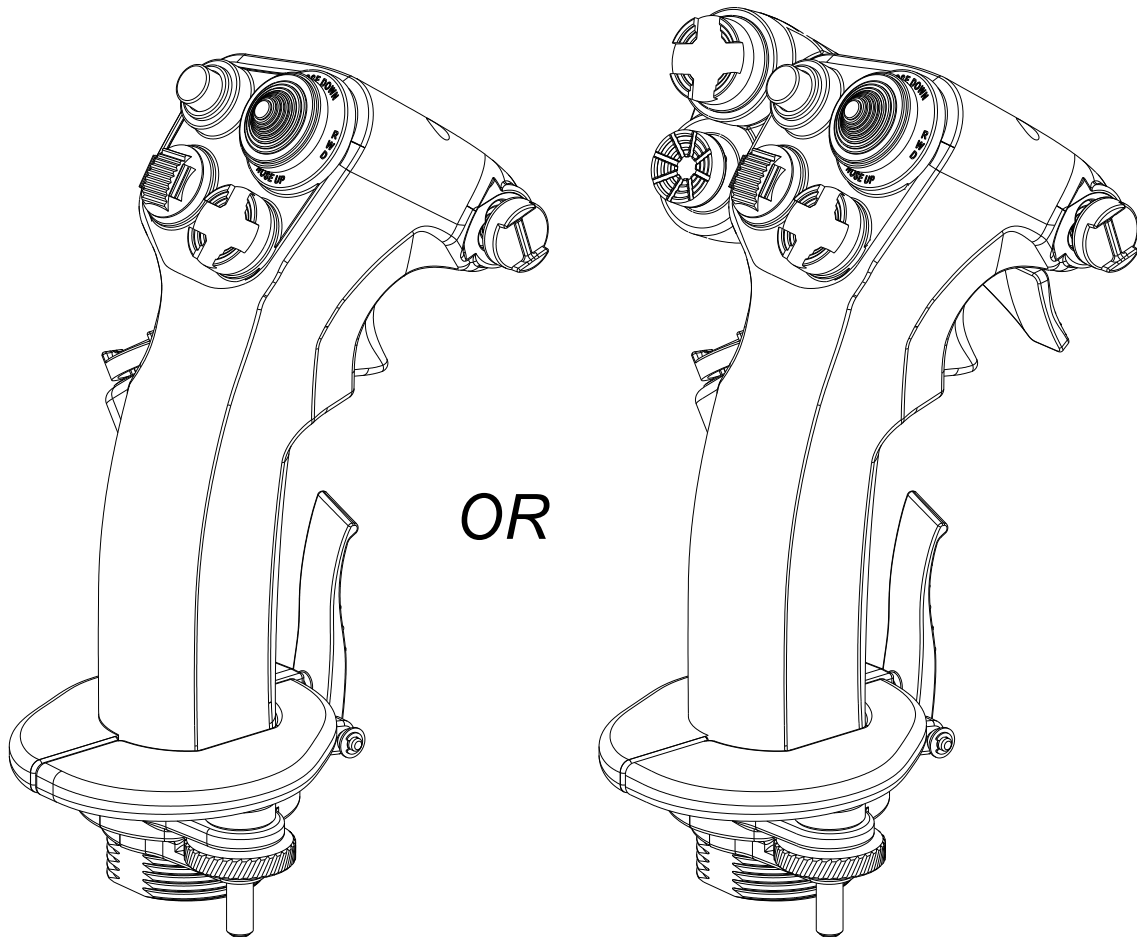
Content inside



- | | |
|----------------------------|---|
| ① F-16 Grip (1#) | 1 |
| ② accessory box (2#、3#、4#) | 1 |
| ③ Tool bag (T1、T2) | 1 |

1 Parameter

1.1 Performance



You can use it with the mini-joystick and 5 directional press switch or without.

1.2 Compatibility

- ① Compatible with J1;
- ② Compatible with J2;
- ③ Compatible with Z axis or extension kit.

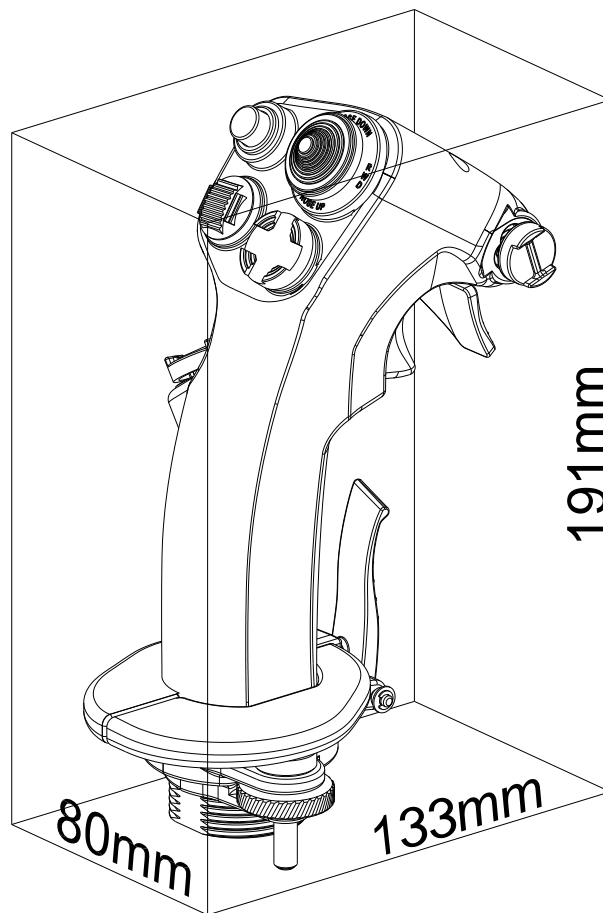
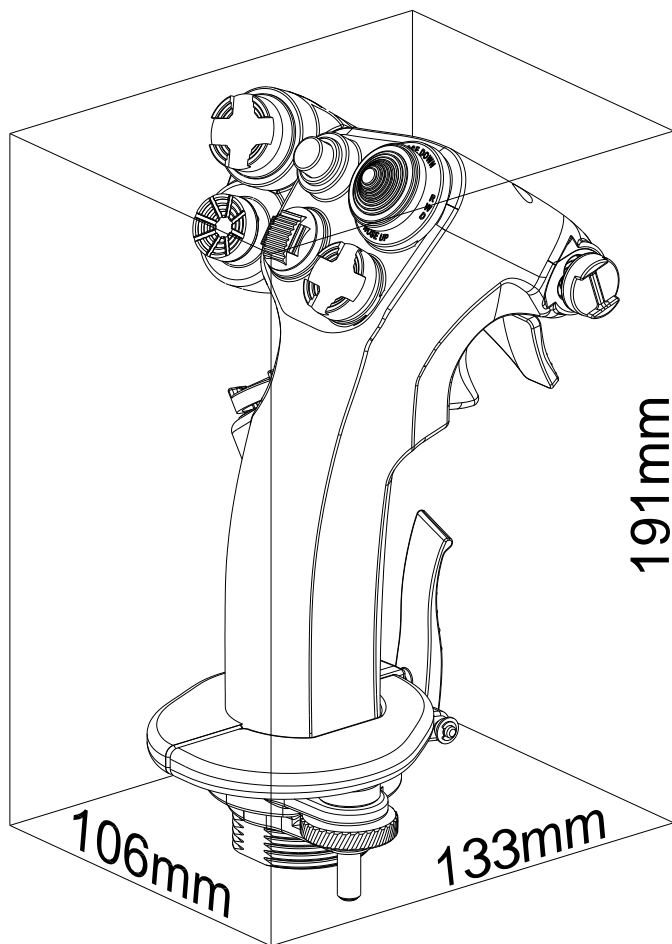
1.3 Size

Long*width*height

With extension :133mm*106mm*191mm;

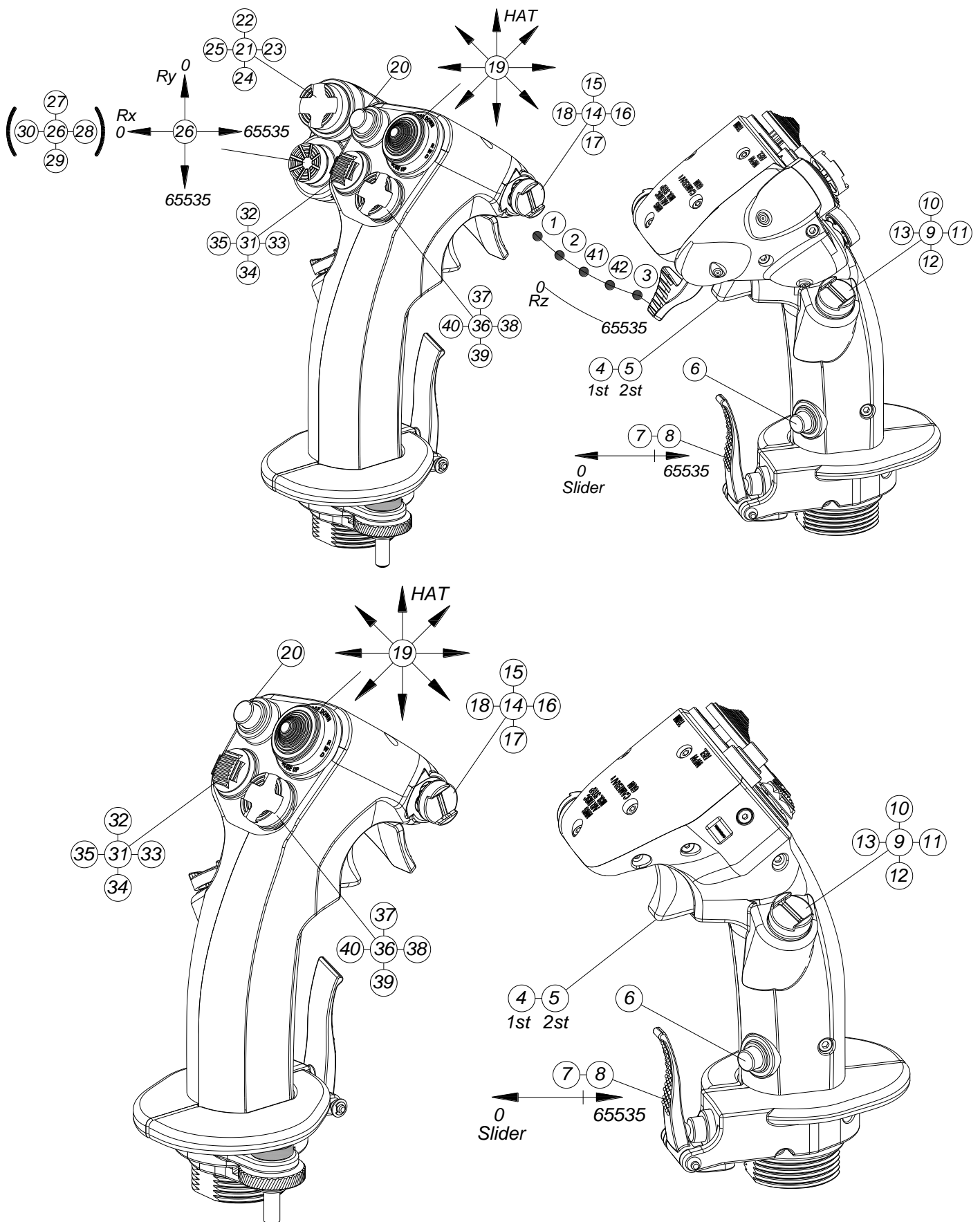
Without the extension :133mm*80mm*191mm;

Mass =0.7Kg=1.55lb.



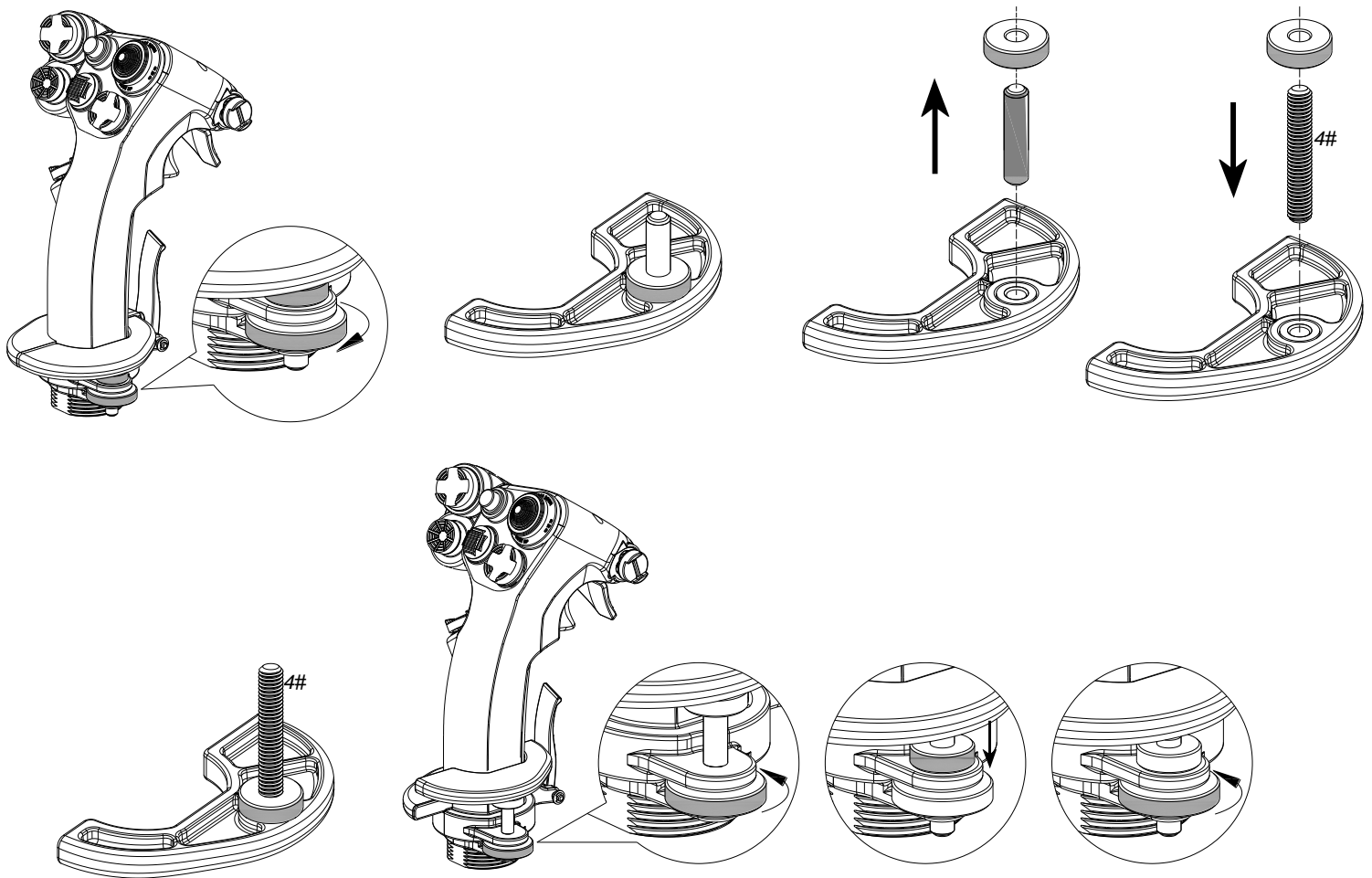
2 Function

2.1 Button/Functions



2.2 Adjustment

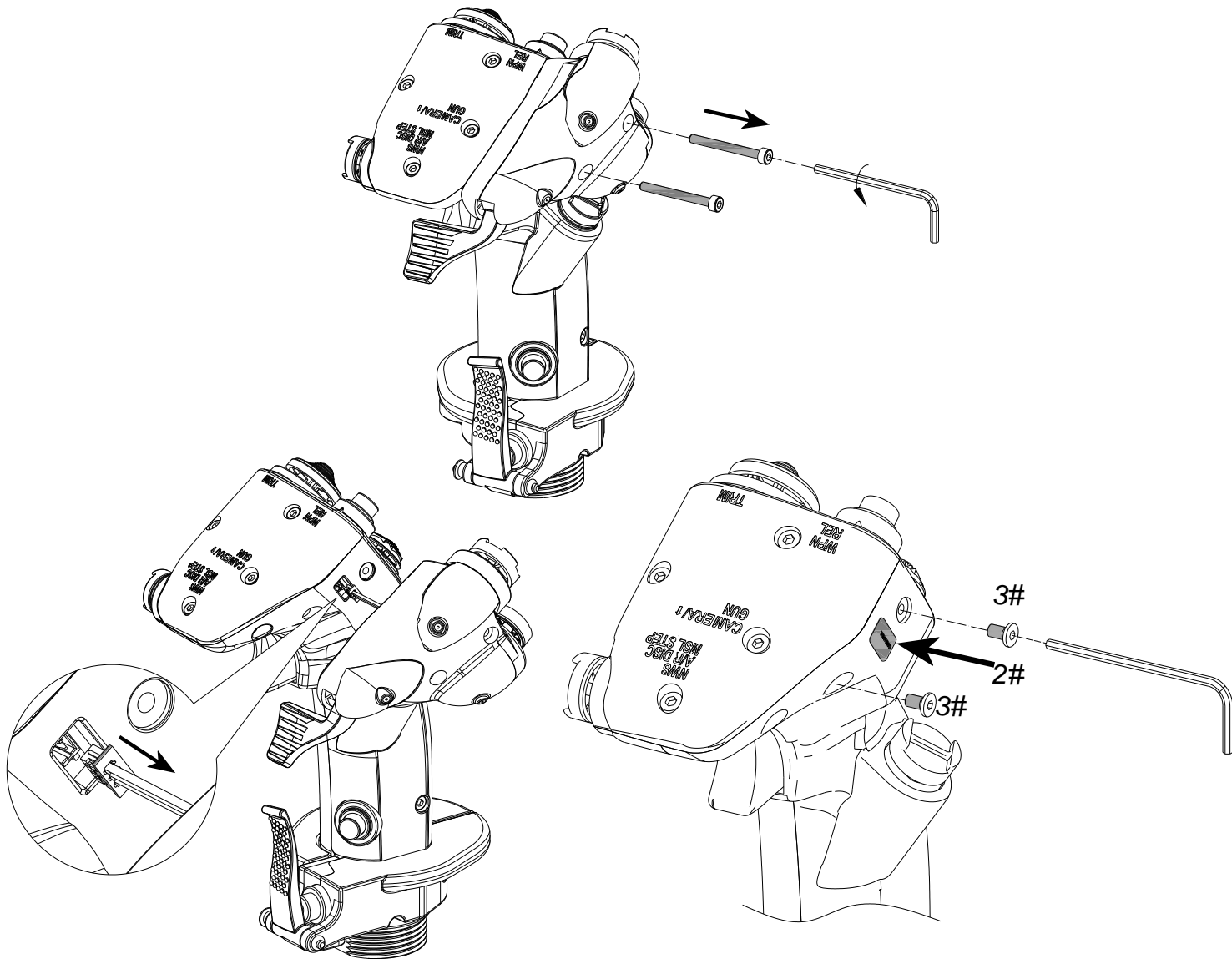
Adjustment for hand rest



- ① Loosen the screw;
- ② Take the hand rest off;
- ③ Take the nuts and short screw off;
- ④ Insert the 4# Screw;
- ⑤ Insert the nuts;
- ⑥ Put the hand rest back in place;
- ⑦ Turn the big screw to adjust the hand rest to match your needs. Screw the small nut into the bottom. Tighten the Big screw.

3 Assembly

Extension Assembly



- ① Unscrew the 2 screw;
- ② Use a piler to remove the screw;
- ③ Inter the plug;
- ④ insert and tighten the two 3# screw.

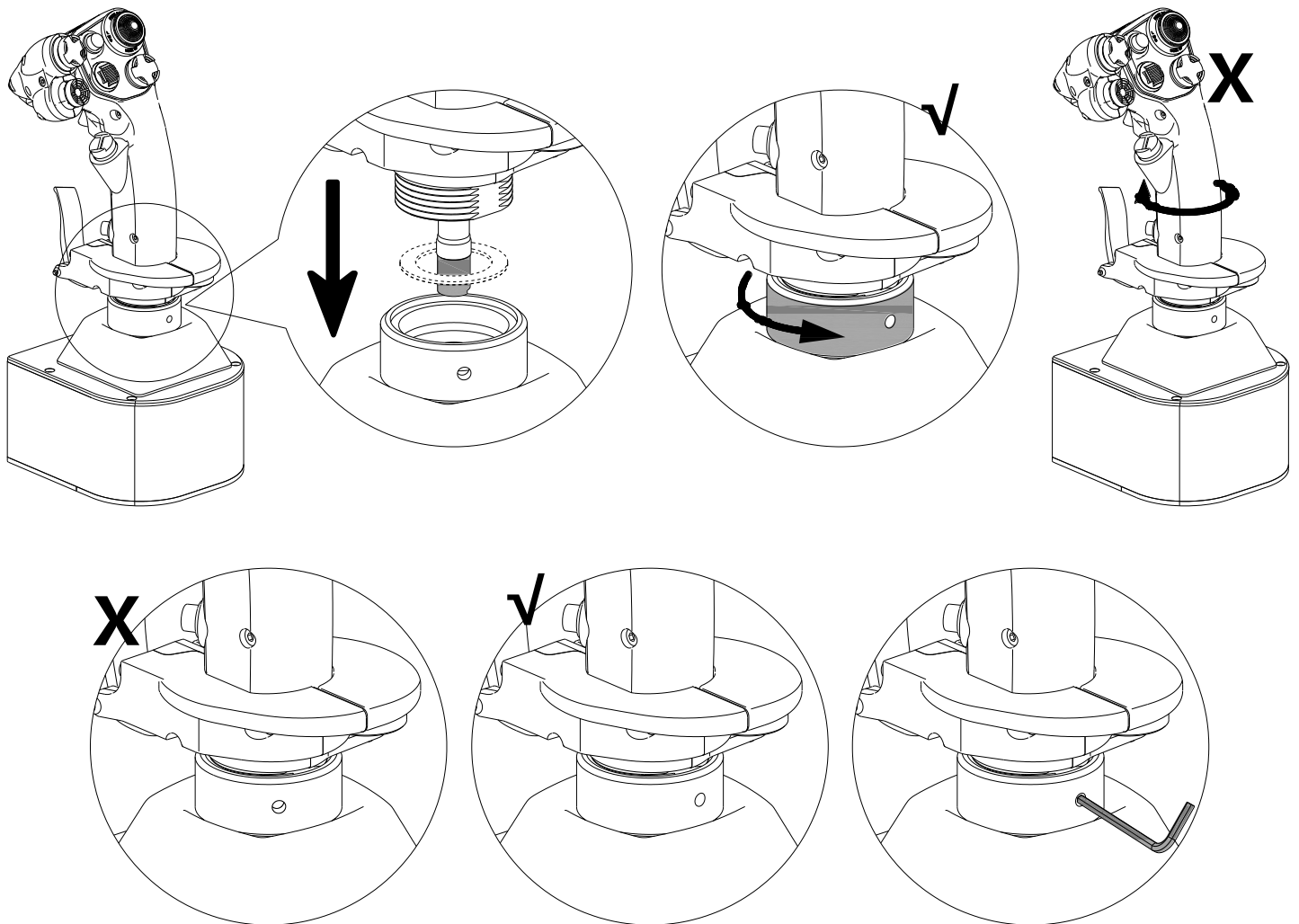
4 Connection of the parts

* Grip connection with Z axis and extension, please review FA18 HOTAS INSTALL GUIDE Ch 3.2 and 3.3.

* If the accessory has a washer, please check the Ch 5 step 1.

5 Base assembly

Connection with J1/J2

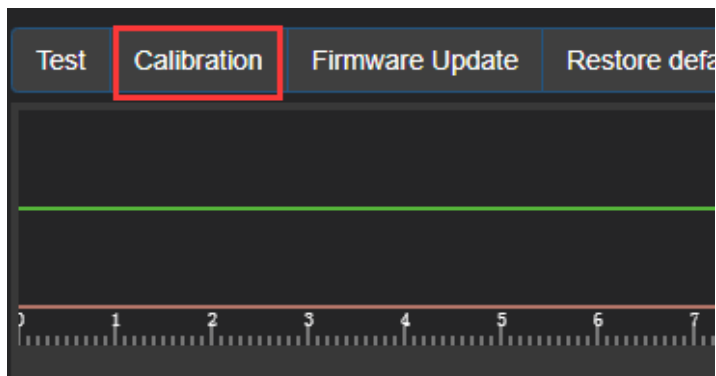


- ① If you have the washer, Make sure it goes between the grip and base. If not proceed to step 2;
- ② Pull the ps2 cord from the grip, connect to base;
- ③ Up-screw the base screw nut while holding the grip. DO NOT ROTATE THE GRIP;
- ④ The Inspection hole should align the flat surface. If not, try one or two more turn;
- ⑤ Using the allen wrench in tool box tighten up the secure screw.

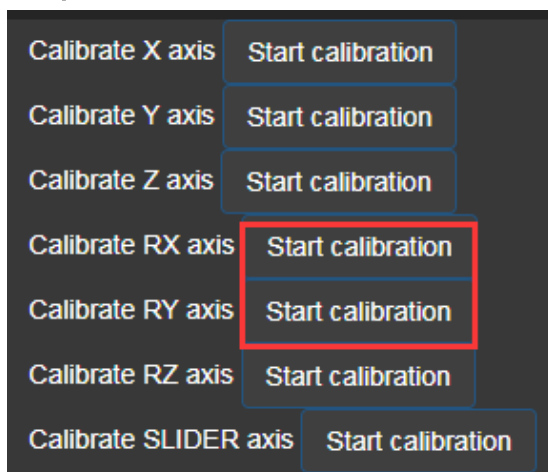
6 Calibration

6.1 Mini-joystick calibration

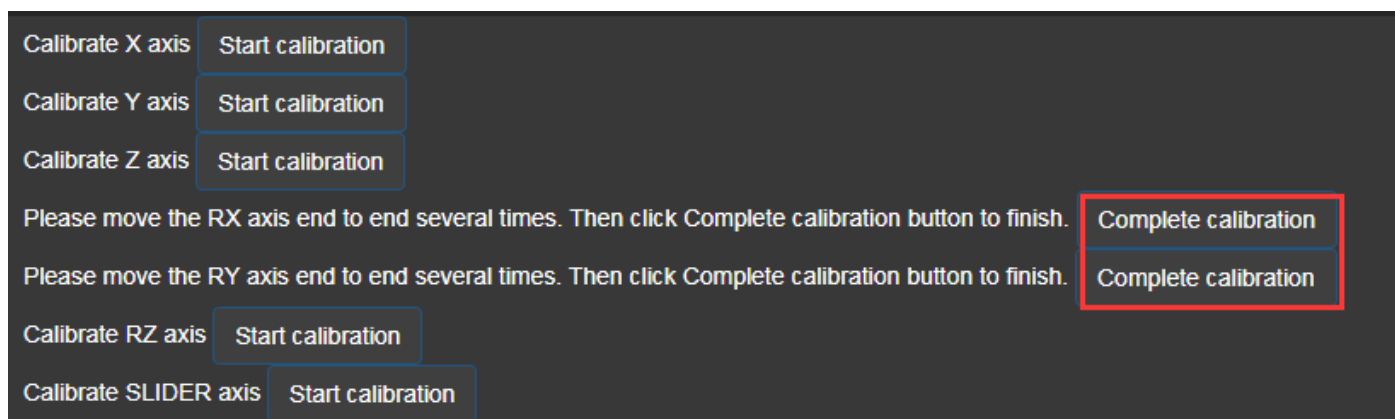
- ① Start sim App pro. Enter the Test page. Click calibration;



- ② In the calibration page, click the options in red square, move the mini-joystick full range;



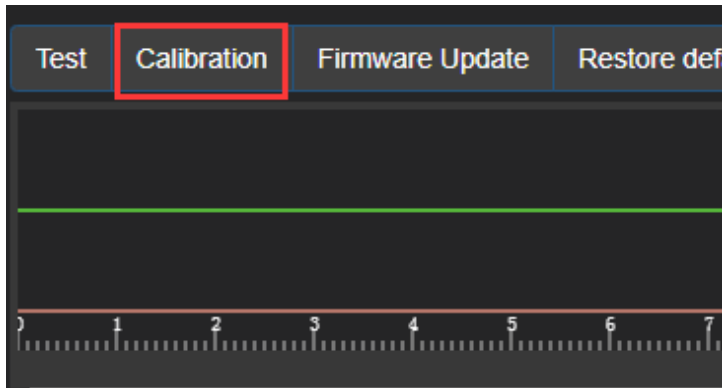
- ③ After the full range movement. Click the options as shown;



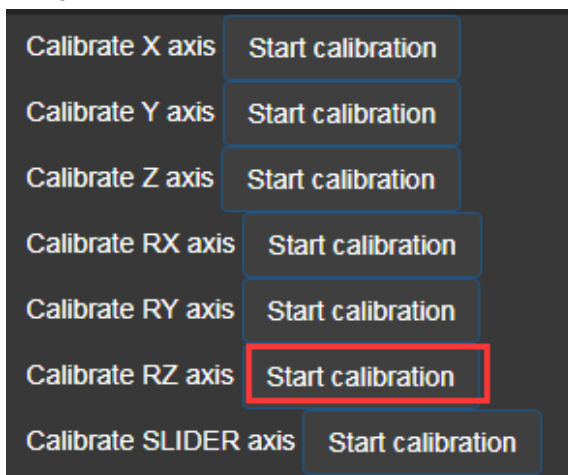
- ④ You have completed the calibration. return to the test page to observe the correct response.

6.2 Rz Calibration

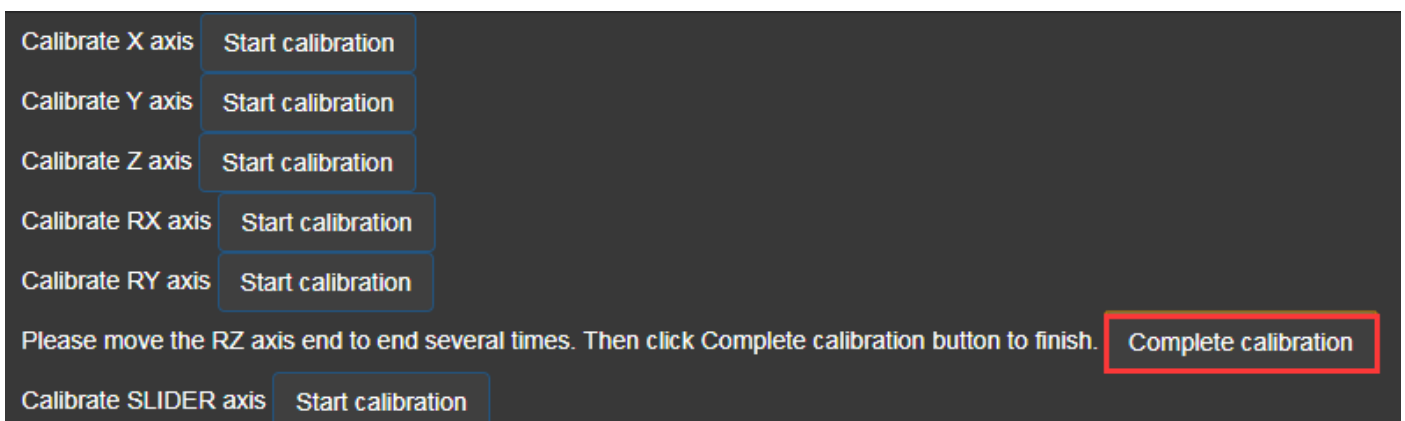
- ① Start sim App pro. Enter the Test page. Click calibration;



- ② At the test page. Click the following button for calibration. Move Rz trigger full range for calibration (Do not move to the top position) ;



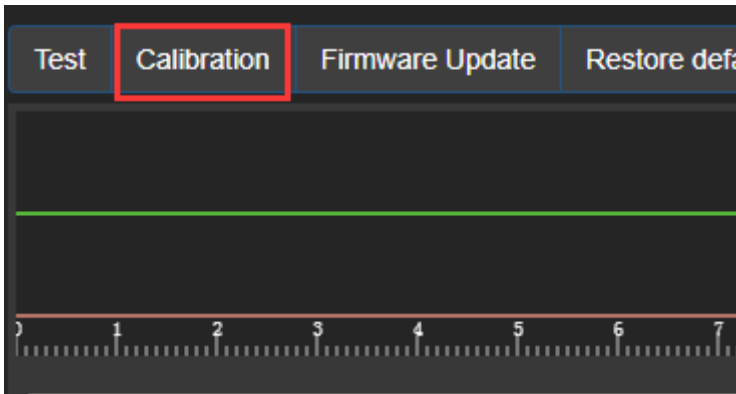
- ③ After the full range movement. Release the Rz trigger, Click the following options;



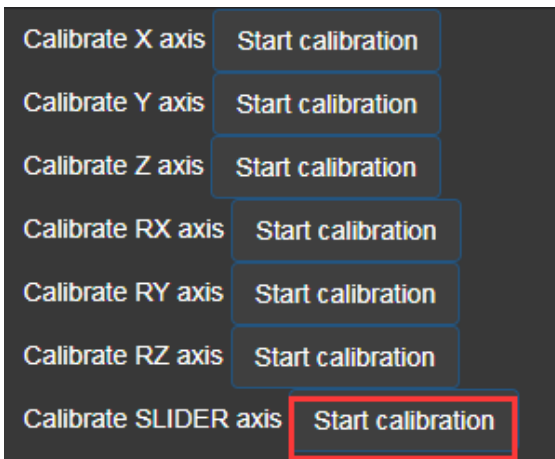
- ④ Return to the Test page, check if the calibration is correct.

6.3 Slider Calibration

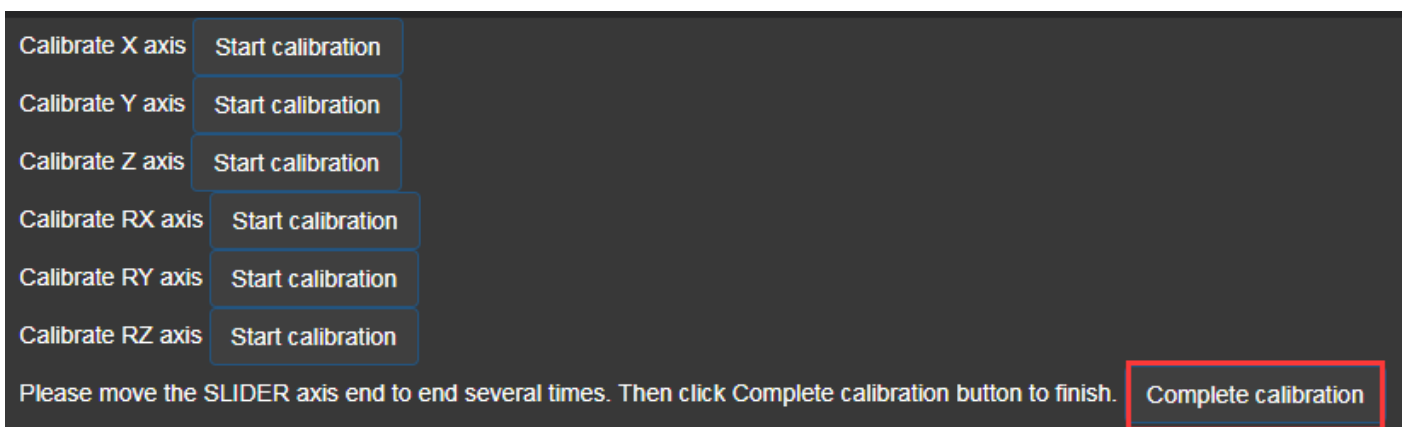
- ① Start sim App pro. Enter the Test page. Click calibration;



- ② At the test page. Click the following button for calibration. Move slider full range for calibration;



- ③ After the full range movement, Click the following options;



- ④ Return to the Test page, check if the calibration is correct.

* This is the final version of the manual,all update will be made online.

成都翼胜科技有限责任公司

WWW.WINWING.CN

INFO@WINWING.CN

High-tech International Enterprise Zone No.19 Building,Changshengqiao Road

1111#, Pidu District, Chengdu,China 610000